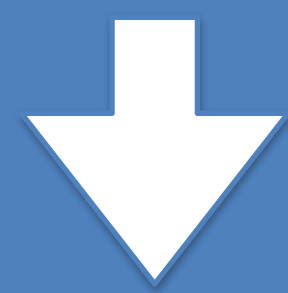
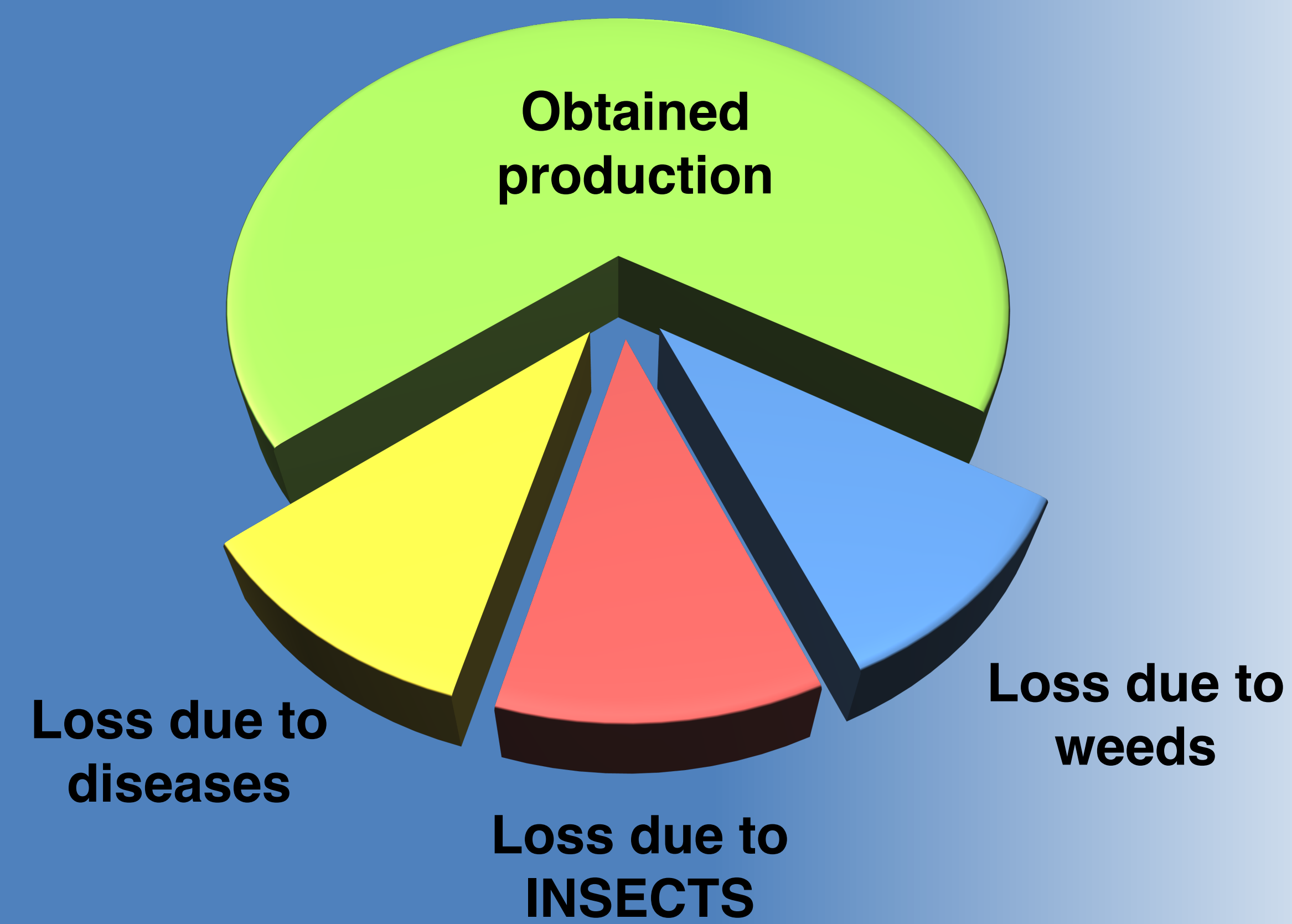


Crop pests

Humans rely on agricultural crops to meet daily caloric and nutritional needs.



Insects can cause significant crop loss



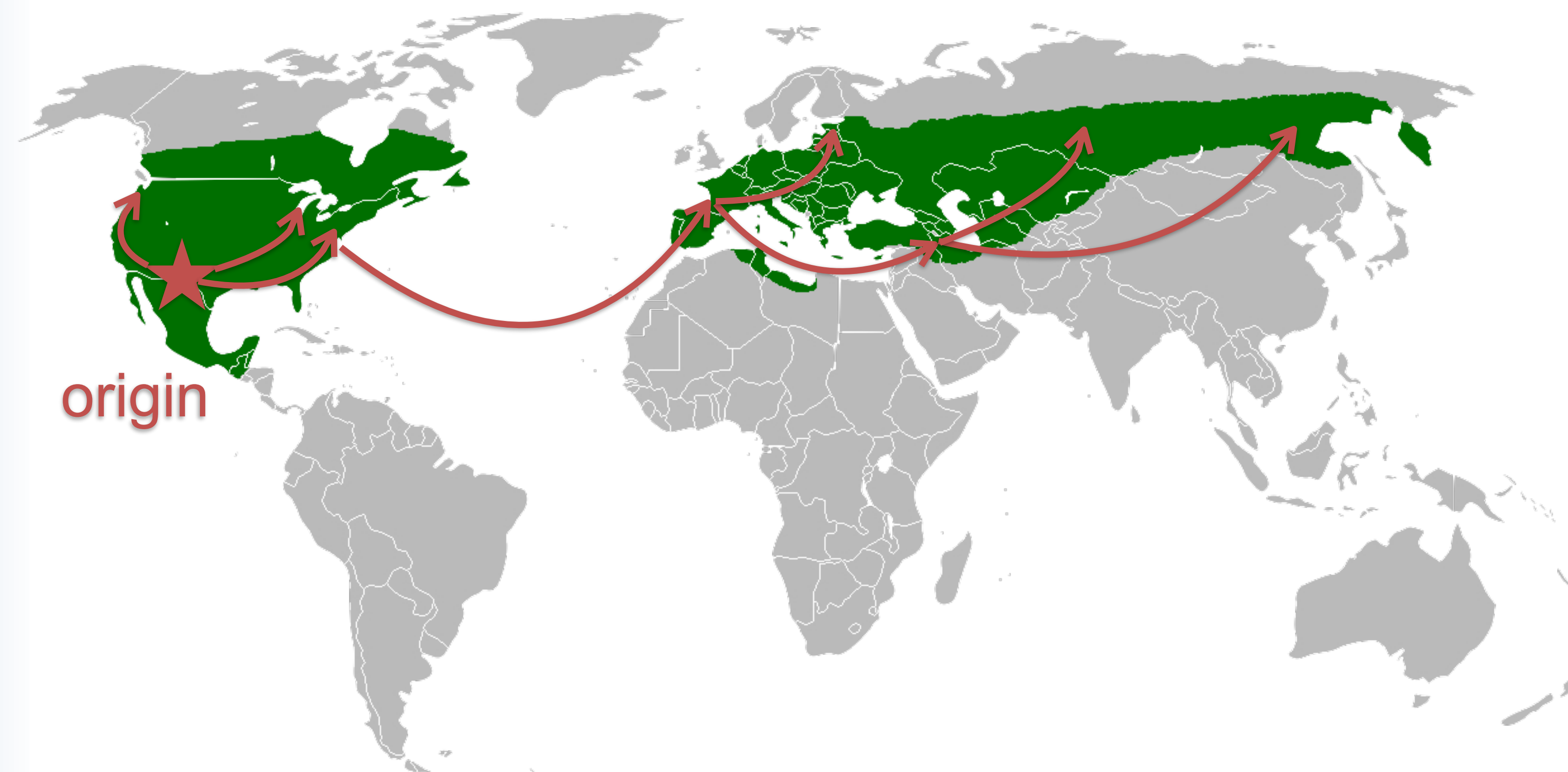
In many cases, pesticides are the main tool used to manage insect pests.



The Colorado potato beetle



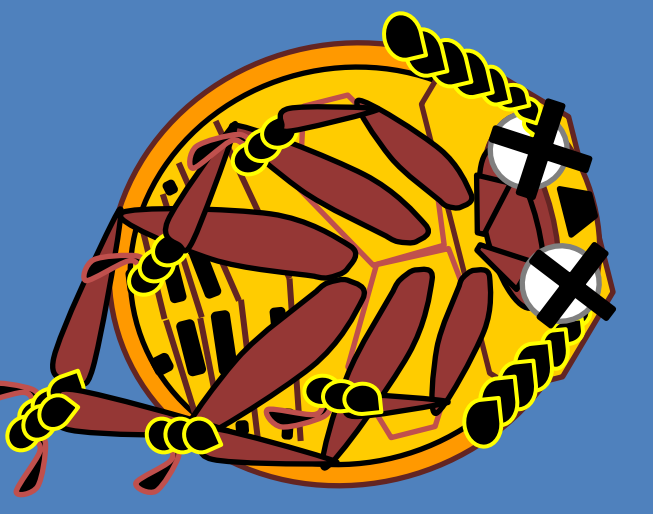
... a global potato pest



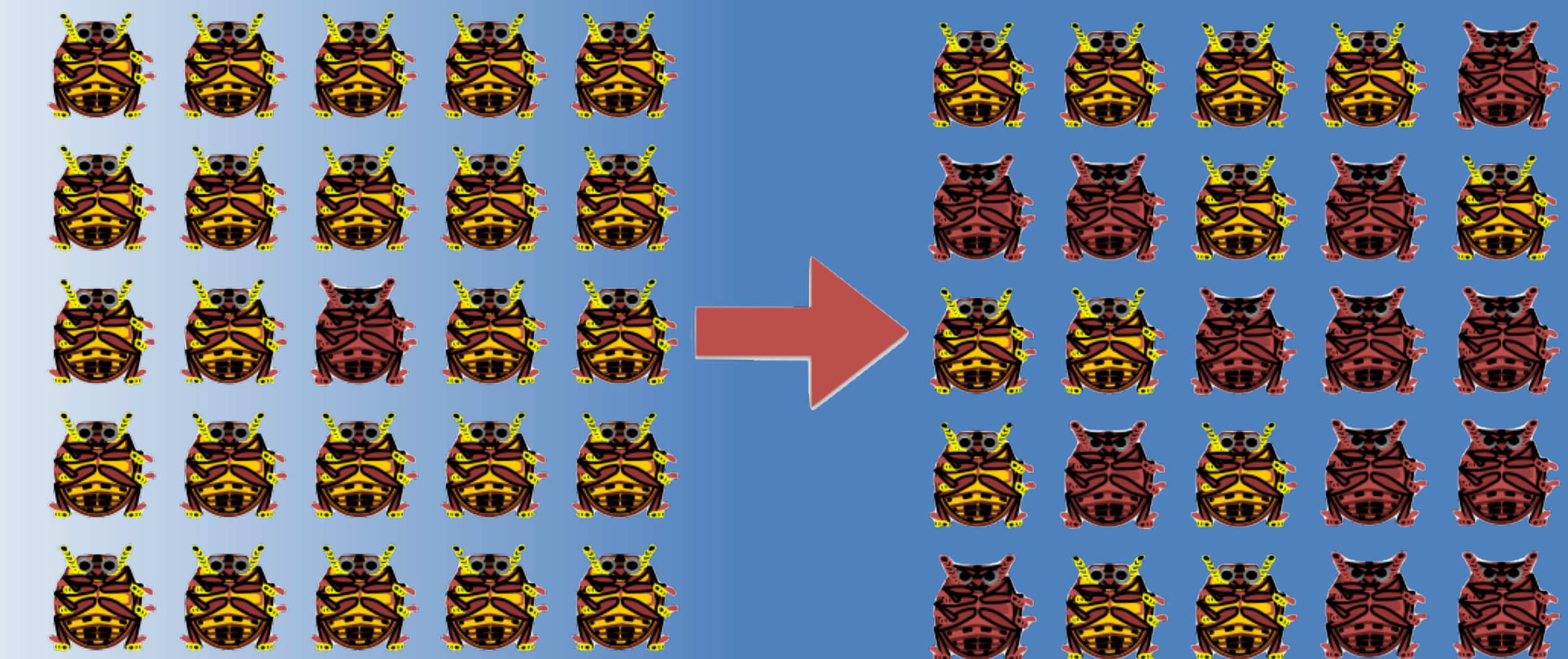
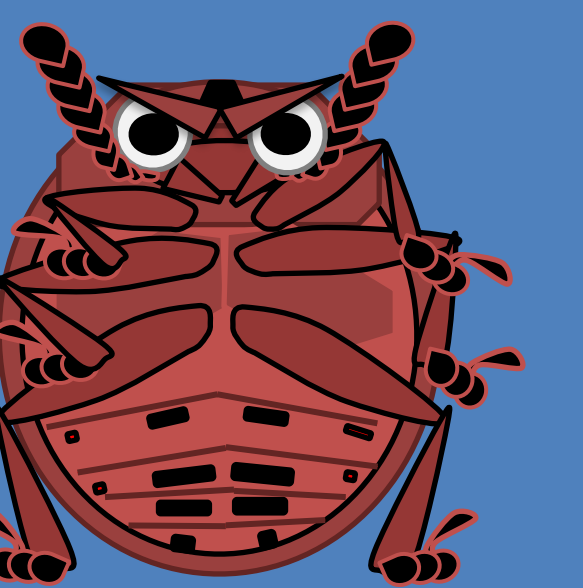
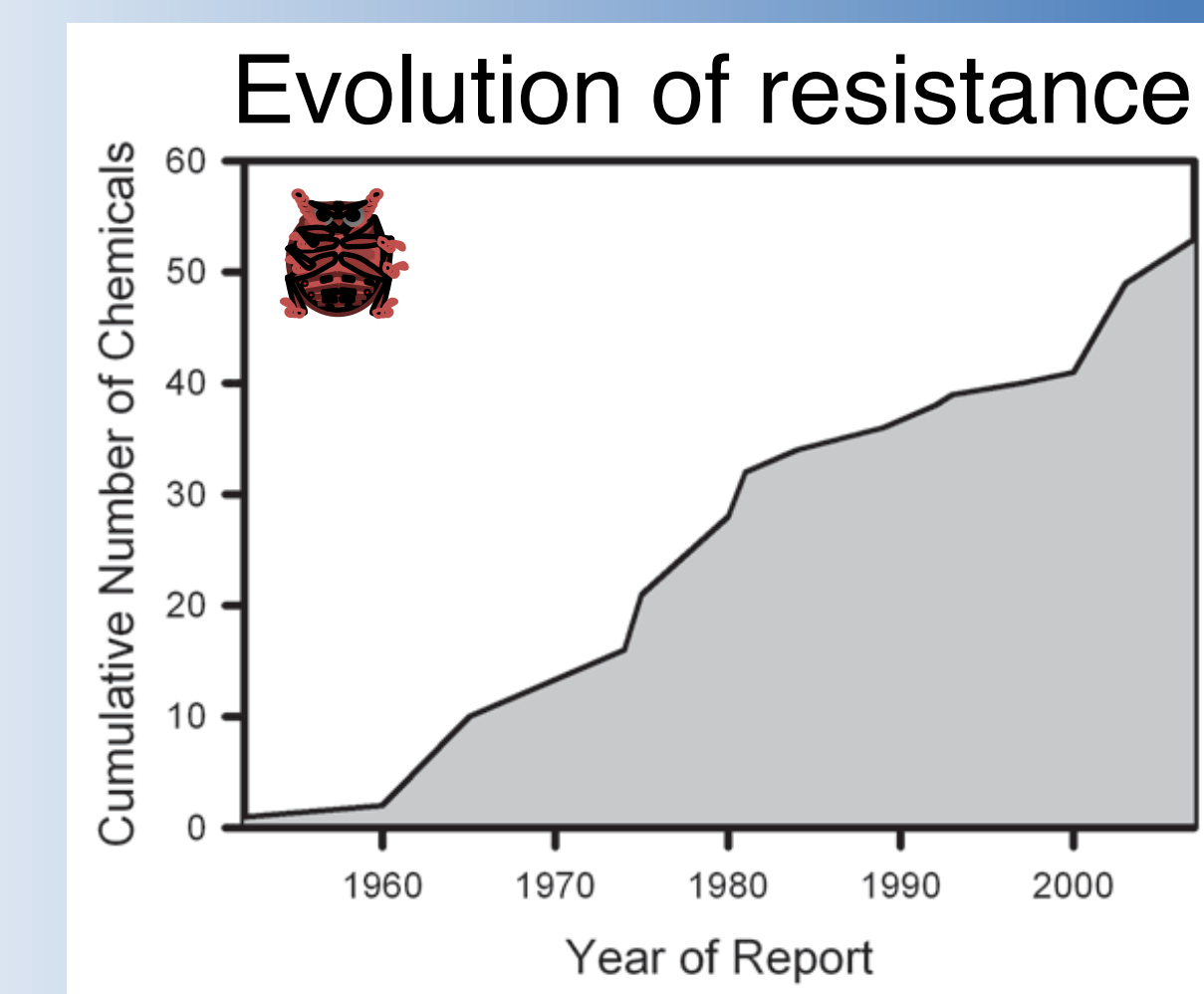
Its infamous history led it to be used for anti-American propaganda!



Pesticide resistance



! Pesticides often fail to control insects due to evolution of resistance.



MOLECULAR ECOLOGY LAB:
(sean.schoville@wisc.edu)

We study *how resistance to pesticides evolves in insects* to manage insect pests more effectively.

